



V.KO DRY Van Box Kit

A True Schmitz Cargobull for the Light Commercial Vehicle Sector.



A Class of its Own.

The First 'Elephant' for the Light Commercial Vehicle Sector from Three to Six Tonnes.

The V.KO DRY van box kit from Schmitz Cargobull for light commercial vehicles combines outstanding practicality with exceptional economy. Delivering the freight safe and dry to its destination is a matter of course for a box body in the three to six tonne class. The real challenge lies in maximising the payload and optimising the purchasing, maintenance and value retention. Our new design addresses exactly these issues.

Drawing on our decades of experience with box and dry freight bodies for heavy distribution and long-distance transport, we maintain our high standards of reliability and low TCO* for the entire service life. You can enjoy Schmitz Cargobull's proven 'elephant quality' from the very beginning.

As Europe's leading manufacturer of trailers for long-distance and distribution transport, we are the experts for optimum road transport.

*TCO – total cost of ownership



Light weight, heavy duty.



More than One Tonne Payload. The key benefit of the V.KO DRY van box kit is the significantly higher payload exceeding one tonne. As a result, the Schmitz Cargobull body carries up to 10% more payload* than a comparable sandwich construction – without making any compromises in manufacturing quality, durability and service life. The V.KO DRY remains an investment with high value retention – as reflected by its high resale value, exactly what you would expect from Schmitz Cargobull.

You enjoy additional benefits thanks to our comprehensive service quality throughout Europe (page 8) and reliably short delivery time along with rapid and safe assembly (page 9).

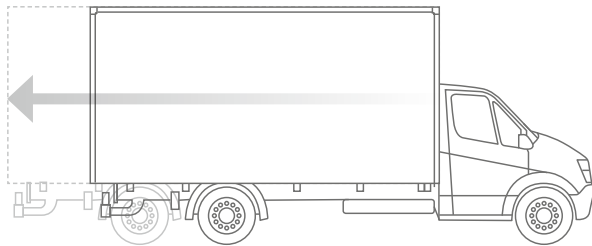
*The value can vary depending on the equipment and configuration.



The Customised Transport Solution.

Exactly How You Need It.

The V.KO DRY van box kit consists of newly developed sandwich panels with GRP covering layers. These are produced entirely at our own plant. The panels with a PU foam core are light, durable and only 20 mm thick. The standard design of the V.KO DRY features a translucent roof and two-wing rear doors. A handle and ladder simplify entry and exit. The walls and the high quality aluminium profiles are available in a variety of white tones. The position lights at the front and rear along with the third brake light are integrated into the profile and their electrical cabling is factory fitted. Standard features include an LED roof light with a motion sensor.



The choice is yours: the V.KO DRY van box kit is available in 2 standard sizes – optimally designed to match the vehicle manufacturers' specifications.



Hand handle (optional)

Reversing camera (optional)

Third brake light at the rear

Positioning lights Rear

Side door (optional)

Access ladder (optional)

Intelligent Modules.

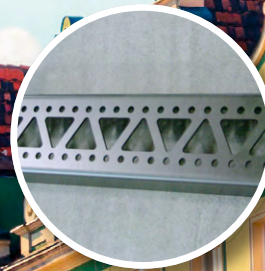


Expertise in Lightweight Design. The completely newly developed V.KO DRY van box kit combines the modules intelligently to provide optimal absorption of forces, despite the lightweight design. The weight of the floor has been vastly reduced and the entire surface is fully load-bearing. This innovation enables more payload yet the lightweight design makes no compromises with regard to usage.

Schmitz Cargobull has drawn on its 40 years of sandwich panel production competence for the V.KO DRY. The perfectly fitting in-house production provides sturdy, modular components with a thickness of only 20 mm which require no additional frame. Fully integrating the connecting profiles into the wall construction reduces the weight and, when combined with specially selected industrial adhesives, achieves a body strength which even fulfils the demanding standards of DIN EN 12642 Code XL. This has been proven with hydropulser tests using a stresses of 40g, which simulate a lifetime of use over many years within one month.



Front position lights



Weight-optimised I-beams



Translucent roof



Tail lift preparation (optional)

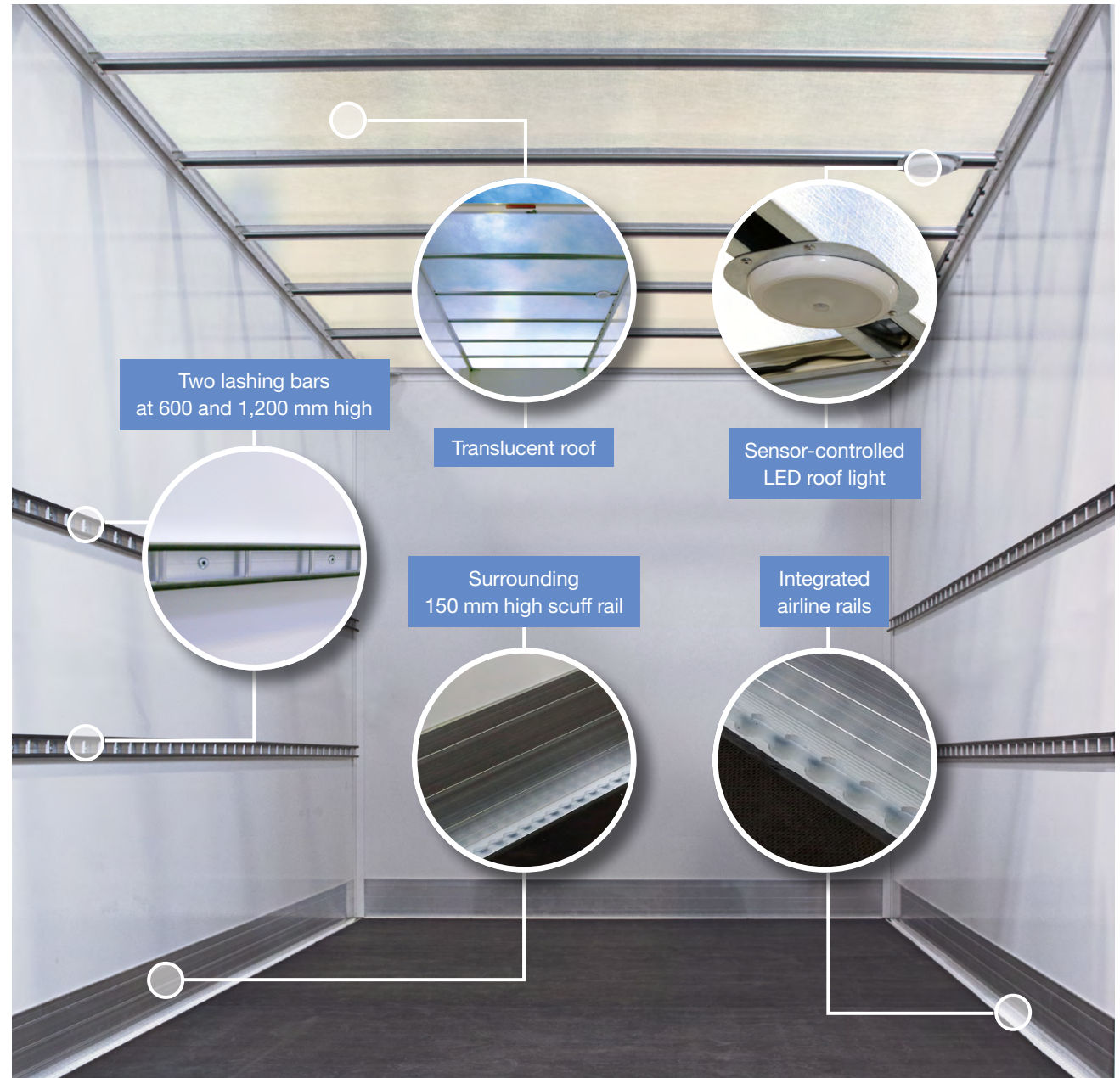
Rapid Securing.

Load Securing is a Factory-fitted Feature.

Integrated load securing has to be simple so that you actually use it. It also has to match the way you work. The practical airline rails are integrated sideways into the floor and are automatically included in every body. The airline rails even fulfil the strict standards of DIN EN 12640 for lashing down freight. The surrounding 150 mm high scuff rail provides additional protection for the interior and the freight.

When placing the order, you can also order additional load securing rails for the side walls. You can choose between lashing bars or combo-anchor rails. In addition, two heights are available with a horizontal load securing rail at a height of 900 mm (from the floor) or two load securing rails at 600 and 1,200 mm. Your rail combinations are also available for the bulkhead as an option. The rails are pre-installed when the body is delivered.

This ensures that you can utilise your ideal combination of lashing belts and load securing beams to quickly and safely secure the freight.

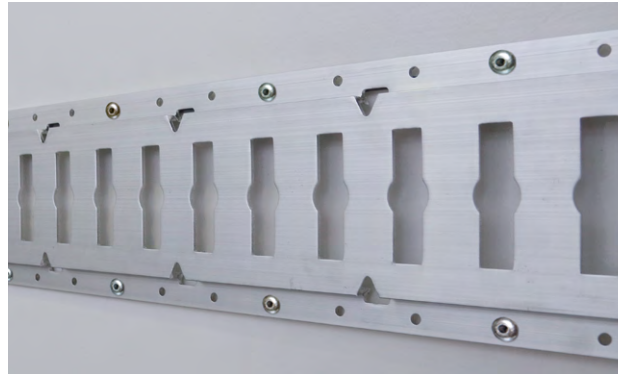


A better workplace.

Let There be Light! Good lighting is essential for rapid and safe loading. Our translucent roof allows you to use daylight to evenly illuminate the interior. The slightly curved translucent roof elements help water and snow to run off the roof, reducing soiling. A bright, energy-saving LED roof light (standard feature) provides additional light. Naturally, it is also fitted with a motion sensor so there is no need to search for the switch when loading. A second LED roof light is also available as an option.



The energy-saving LED roof lights provide improved interior lighting. Automatically and when needed thanks to the integrated motion sensor.



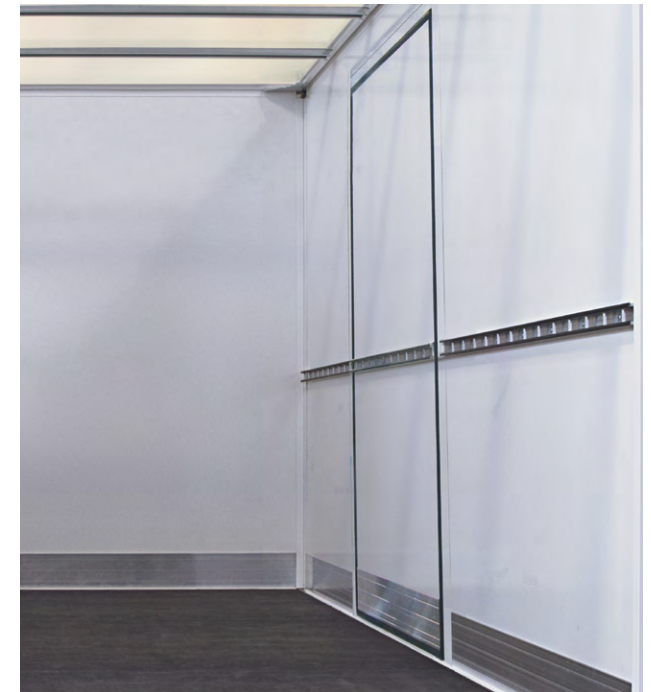
Full-length combo-anchor rails for lashing straps and load securing beams – your alternative to the lashing bar.



GRP sandwich roof with light insulation. (Optional)



Optional load securing rails on the bulkhead matching the load securing on the side walls.



Full-length load securing on the side door. The side door is flush with the interior, providing a consistent interior width along the entire length.

Service Included.

Safe on the roads with Schmitz Cargobull.

Good products without comprehensive service are almost unimaginable today. Schmitz Cargobull covers all of the needs of your V.KO DRY van box kit throughout its entire service life – regardless of wherever your vehicle happens to be.

Your Benefits:

- Spare parts delivery in 24 hours* via the Schmitz Cargobull online portal EPOS.
- Europe-wide service partner network with 1,300 specialist workshops for body assembly, maintenance and repairs.
- Warranty for the body extended from two to three years (optional).
- Training programmes for your workshop in assembly and service, offered by Schmitz Cargobull Parts & Services.
- Our experts and our sales team throughout Europe are available now to help you if you have any other questions: Telephone +49 (30) 435991-23

*Applies for 95% of the original spare parts in stock.



24h original spare parts.



1,300 service partners.



Rapid support.



Warranty extension to three years (optional).

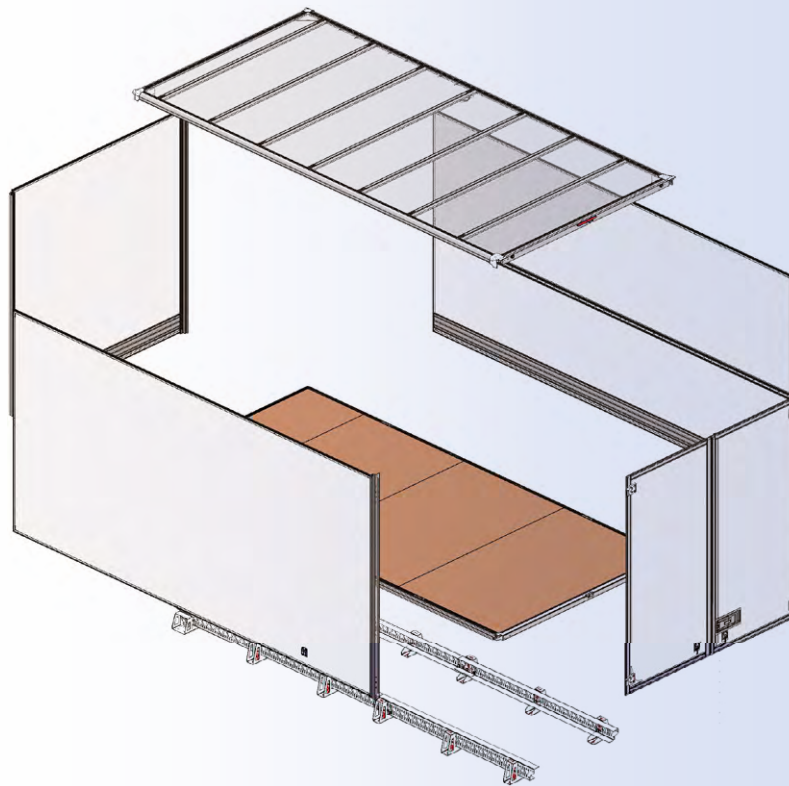


Certified quality approved by the vehicle manufacturer.

Lightweight Body. Perfectly Prepared for Rapid Assembly.

The V.KO DRY van box kit from Schmitz Cargobull comes as a complete set. The walls are prefabricated, with all of the fittings and details. The intelligent joining technology makes assembling the box body exceptionally quick and easy. Joining the modules with special industrial adhesive creates a highly durable

bond. The factory fitted brackets on the I-beams are already prefabricated for the specific chassis. The corresponding approval certificates for our bodies have been issued by the manufacturers or applied for. You can download our assembly manual, if needed.



Rapid delivery.

We guarantee delivery of the kit within 14 working days*. This enables you to reliably schedule the assembly on the vehicle. Assembling the V.KO DRY van box kit is child's play, thanks to the components being preassembled as much as possible.



Two men – Two hours.

Two installation technicians require less than two hours to assemble the kit. The V.KO DRY van box kit from Schmitz Cargobull comes as a complete set with a maximum of seven prefabricated modules.

*The period begins once the order details have been clarified.

A Reliable Partner.

The Blue Elephant has Stood for Reliability and Innovation for 125 Years.

We are experts for efficient road freight transport. For decades, more and more customers have placed their trust in our intelligent transport solutions for distribution and long-distance haulage. This has made us the uncontested No. 1 manufacturer for trailers and bodies in Europe. At eight locations we produce semi-trailers for transporting general cargo, box bodies for temperature-controlled goods, for dry freight and for secure transport, along with bulk goods models for the construction and agricultural industries. The entire production process is based on an extremely flexible modular toolbox that utilises intelligent manufacturing and production technologies for up to 13 million individual customer solution options. The comprehensive service covers the entire lifetime of our products and has long been an integral part of our efficient transport solutions.

Schmitz Cargobull has stood for reliability and innovation and trust for more than 125 years. Our goal is always the shared success with our partners – you can also count on this with the V.KO DRY van box kit.



Further information about Schmitz Cargobull is available online: www.cargobull.com/en/



Info.

Easy for Vehicle Manufacturers.

We are pleased to answer any questions about the V.KO DRY van box kit: Telephone +49 (30) 435991-23

Order the V.KO DRY van box kit.

You order the V.KO DRY van box kit together with the chassis of your choice. Working together with your customer, you go through the options available on the order list. The V.KO DRY is ready for delivery after only 14 working days.

Contact.

Schmitz Cargobull Van Bodies GmbH & Co. KG
Otisstraße 45-47
13403 Berlin
Telephone +49 30 435991-0

Find out more at:

www.cargobull-vanbodies.com/en



SCHMITZ CARGOBULL



VAN BODIES



[Trailer](#) [Services](#) [Technology](#)

Schmitz Cargobull AG · Bahnhofstraße 22 · D-48612 Horstmar · Telephone +49 2558 81-0 · Telefax +49 2558 81-500 · www.cargobull.com
Schmitz Cargobull Van Bodies GmbH & Co. KG · Otisstraße 45-47 · 13403 Berlin · Telephone +49 30 435991-0 · www.cargobull-vanbodies.com